

Opening Address

SUSTAINABLE CITIES

Dr Roger Blakeley
Chief Planning Officer
Auckland Council

This conference is being held exactly one month after the inauguration of the new Auckland Council, after one of the largest organisational transformations in New Zealand's history.

This address will discuss some of the major challenges and opportunities for the new Auckland Council in the context of the conference theme *Transitions to Sustainability*.

One of the global megatrends is that “*cities will drive economic growth*”.

Globalisation and the knowledge economy have repositioned cities as the drivers of national economies. By 2025, 75% of the world's population will live in cities or metropolitan areas. Cities are responsible for 75% of the world's energy use and produce more than 80% of all greenhouse gas emissions, mostly carbon dioxide.

Some of the challenges are to establish Auckland as a world-class city that is known for:

1. A strongly growing economy, capitalising on high value, knowledge intensive, high technology industries.
2. Transforming to a low carbon economy by shifting towards renewable energy usage and radically improving energy efficiency.
3. Quality urban design that creates distinctive spaces with a strong identity and sense of place.
4. A healthy environment that sustains people and nature.
5. An inclusive city that offers opportunities to all citizens
6. A city known for its cultural vitality.

Auckland Sustainability Framework, September 2007

Eight Goals

The Framework is built around eight interrelated and long term goals:

- A fair and connected society
- Pride in who we are
- A unique and outstanding environment
- Prosperity through innovation
- Te Puawaitanga o Te Tangata: Self-sustaining Maori communities
- A quality compact urban form
- Resilient infrastructure
- Effective collaborative leadership

Auckland Sustainability Framework, September 2007... continued

Eight Shifts

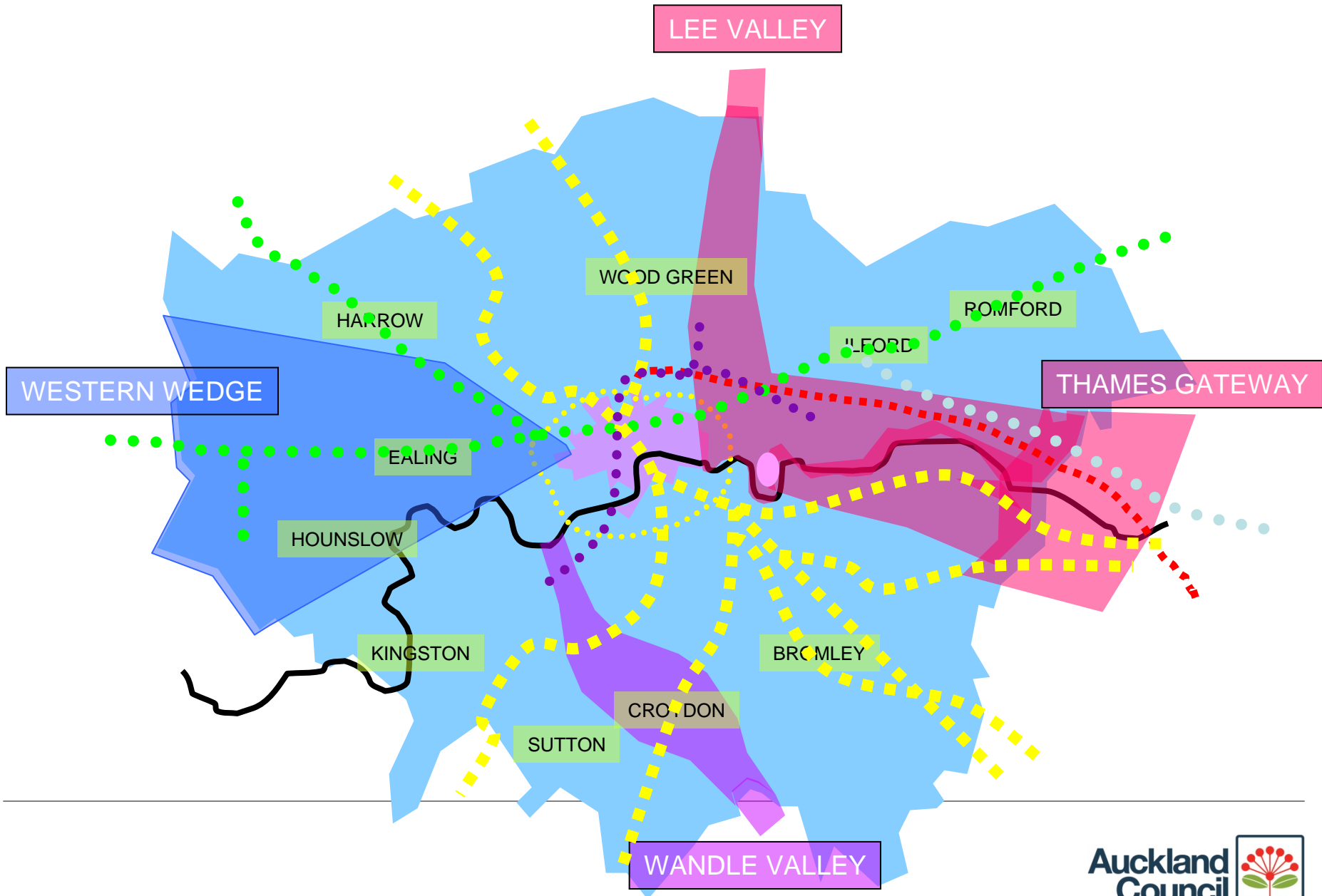
- Put people at the centre of thinking and action
- Think in generations, not years
- Value Te Ao Maori
- Activate citizenship
- Create prosperity based on sustainable practices
- Reduce our ecological footprint
- Build a carbon neutral future
- Integrate thinking, planning, investment and action.

What is a “Spatial Plan”?

“Spatial planning gives geographical expression to the economic, social, cultural and ecological policies of society”



Source: European Charter 1983



What is required in Legislation?

Local Government (Auckland Council) Amendment Act 2010

S 79 Spatial Plan for Auckland

The purpose of the spatial plan is to contribute to Auckland's social, economic, environmental, and cultural well-being through a comprehensive and effective long-term (20-30 year) strategy for Auckland's growth and development.

Summary of Purpose:

- a) strategic direction for Auckland that integrates social, economic, environmental, and cultural objectives;
- b) high-level development strategy;
- c) the future location and timing of critical infrastructure, services, and investment
- d) basis for aligning all plans and funding programmes

What is required in Legislation?...cont'd

The Spatial Plan must:

- a) Recognise and describe Auckland's role in New Zealand
- b) Visually illustrate how Auckland may develop in the future
- c) Evidential base to support decision making
- d) Identify the existing and future location and mix of –
 - i. residential, business, rural production, and industrial activities
 - ii. Critical infrastructure, services, and investment (including, for example, services relating to cultural and social infrastructure, transport, open space, water supply, wastewater, and stormwater, and services managed by network utility operators); and

What is required in Legislation?...cont'd

The Spatial Plan must.....(cont'd):

- e) Identify national and regionally significant –
 - i. Recreational areas and open-space areas
 - ii. Ecological areas
 - iii. Environmental constraints on development (for example, flood-prone or unstable land);
 - iv. Landscapes, areas of historic heritage value, and natural features

- f) Identify policies, priorities, land allocations, and programmes and investments to implement the strategic direction and specify how resources will be provided to implement the strategic direction.



The Auckland (Spatial) Plan will be led by the Mayor and Council

Mayor Len Brown's Vision:

“Auckland will be the most liveable city in the world”

Values:

- Inclusive
- Courageous
- Prudent
- Fair
- Innovative

The Four Pillars:

- Cohesive, resilient communities
- An excellent transport system
- A productive high-value economy
- Quality urban, rural and natural environments (eco city)



The First (Auckland) Spatial Plan

Our thoughts so far:

- Must be bold
- Must be simple
- Must give a clear picture of where Auckland is going and what it is going to do first
- Must be ready to inform the 2012 Long Term Plan
- Should be “co-produced” (prepared with our partners)



The First (Auckland) Spatial Plan

Our thoughts so far – the plan includes?

- Mayor's vision
- Specific goals and targets to be achieved
- What we value
- The principles by which decisions are made
- Our city / region brand – what differentiates us
- Top priorities / complementary priorities
- A rational land use plan
- When, where, how and by whom



First Auckland Plan – what we know

- Major elements of environmental protection
- Population under 5 qualifications



Between 10% and 15% of people
 Over 20,000 people
 10,000 to 20,000 people
 5,000 to 10,000 people

- Population under 25



Regional Parks
 Scenic Reserves
 Rail

- Level of unemployment

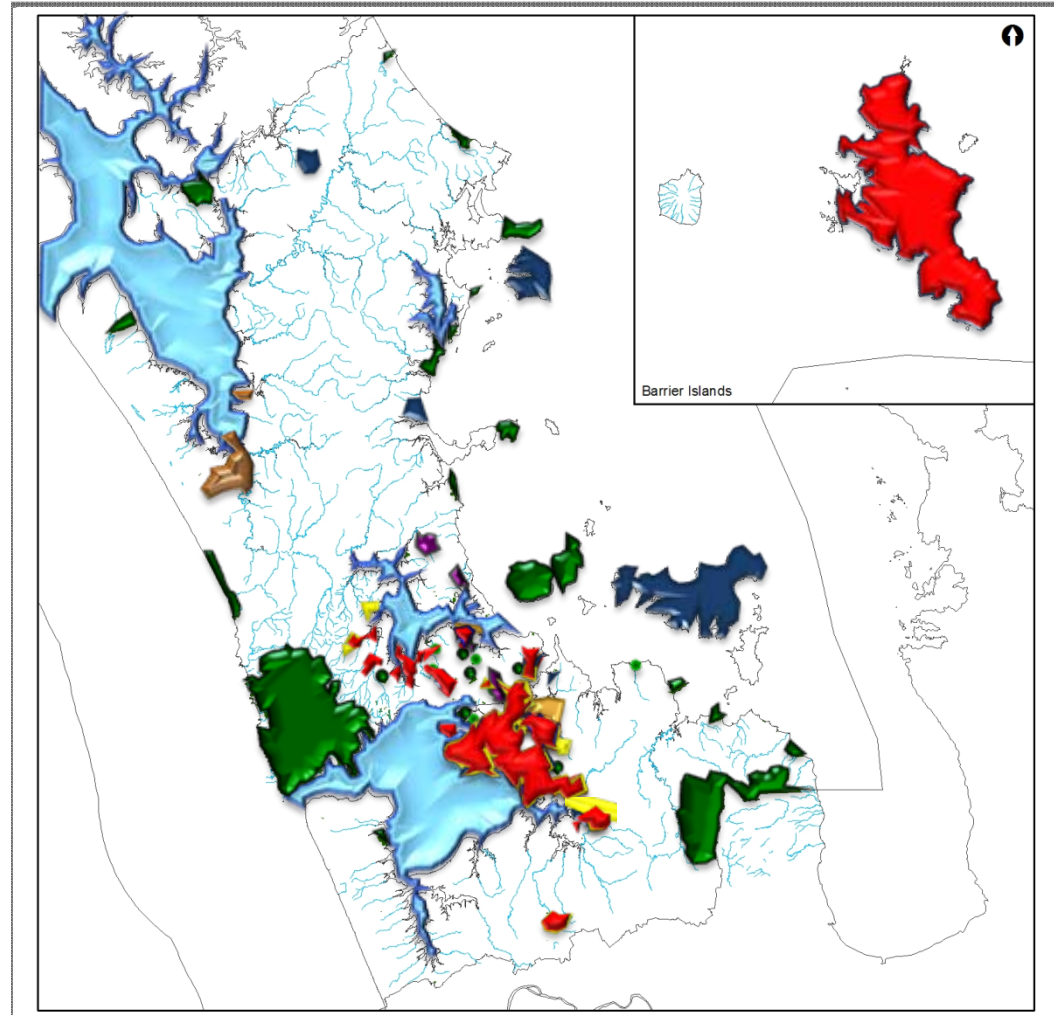


Significant Open Space
 Seafront
 Between 40% and 50% (for people)

- Lowest household income



\$0 to \$40000 pa



First Order “Place-Base – “Mega” Priorities?

Some thoughts

One international city
centre for the whole of
Auckland?

The global southern
gateway?

The northern gateway?

The Hauraki gulf and
islands?

Our harbours and hills?

Your thoughts?



An international city centre for the whole of Auckland



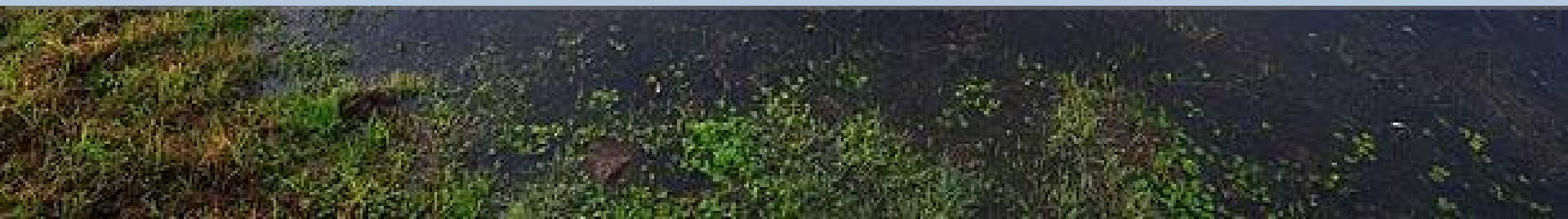
What can be prioritised?

- Integrated plan for the whole city centre
- World class waterfront pedestrian promenade – Auckland’s Champs Elysees?
- Rail loop?
- International convention centre?
- Exemplar 5 star green buildings?
- Wynard Quarter Redevelopment?
- World Class Educational Research Network
- Harbour Crossing?
- Other?





Auckland's global southern gateway



Cross-cutting city-wide priorities?

- First Spatial Plan could also address cross-cutting, city-wide issues – the things people expect to see threaded through everything
 - putting a stake in the ground on future transportation People first, PT second, cars third? Nature of harbour crossings. Understanding and completing the transport network - investing in rail, buses, rapid transit, ferries, pedestrians, street amenity, liveable arterials etc.
 - connecting Auckland to the world through broadband
 - being a clean, green international city
 - creating value and reducing developmental cost
 - urban design principles
 - the role of the rural areas and economy

Economic Development Strategy

The problem

Auckland is:

- 4th city in the world as a liveable city in the Mercer Survey
- 46th city in the world on infrastructure provision
- 84th city in the world on GDP/capita

Bold Goal

- To lift Auckland to the top 10 cities for GDP/capita within 30 years
- Consistent with aspirational Economic Growth Agenda (EGA) goal (matching Australia's GDP/capita in 15 years; increasing exports to 40% of GDP). Auckland's contribution to EGA goal requires GRP/capita to be almost 60% higher and regional exports to be more than three times higher (from \$17b to over \$50b) than business as usual performance

Economic Development Strategy...(Cont'd)

Potential Priority Areas

Sectors

- Processed and High Value Foods
- Marine Industry
- Health Technologies
- Screen Production
- Digital Content
- Tourism

International Connectivity

Human Capital

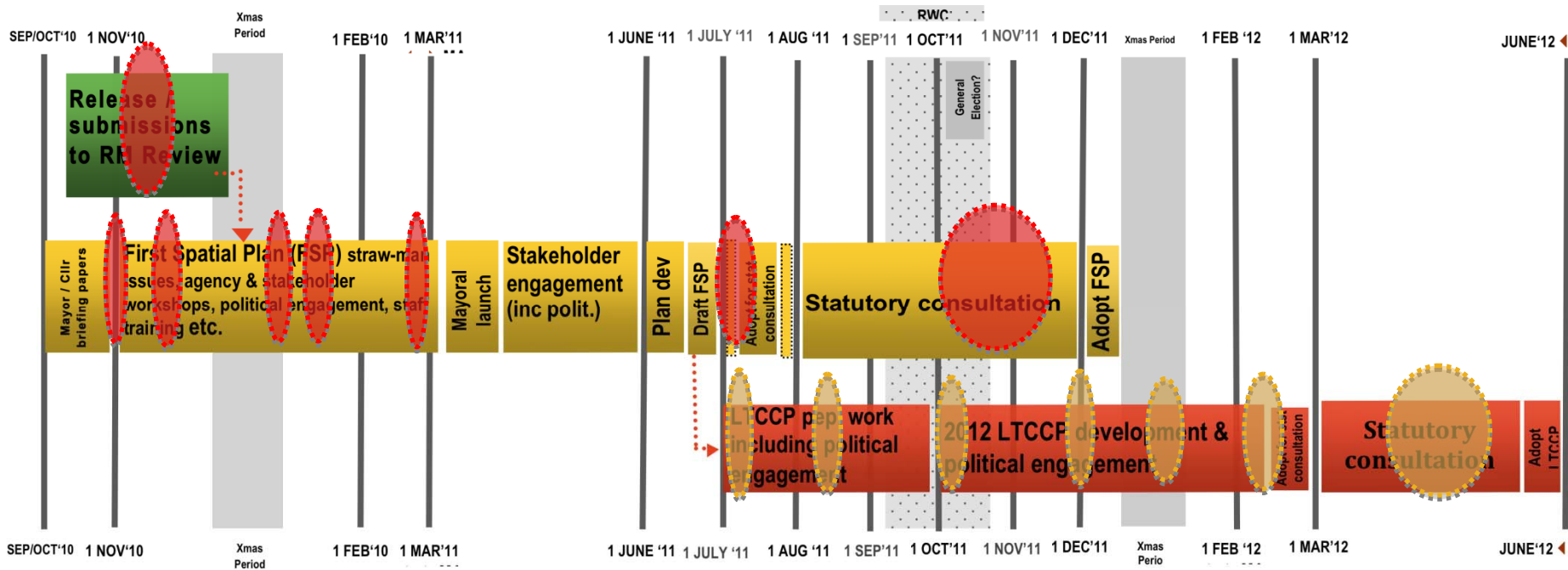
R&D and Innovation

Economic Infrastructure

Leveraging the Auckland Council's balance sheet



Auckland (Spatial) Plan, LTCCP and RM review work programme



Role of Engineering and Science Professionals

It is no surprise that the engineering and science professionals hold the key to unlock the opportunities for sustainable cities through sustainable technologies in energy, transport, buildings, land management, water, waste management and by capitalising on industry sectors where Auckland has competitive strength: high value logistics, clean technology, business and professional services, “neutraceuticals” and value added food and beverage exports, electronics, machinery, marine, ICT, health and education.

Have a great conference !